

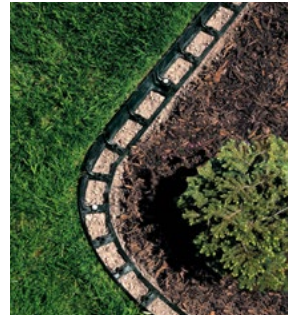
PAVER RESTRAINT – DENSE GRADE



Snap Edge

THE BEST EDGE ON THE MARKET!

- Snip N Flex
- Injection Moulded
- Secure Interlocking End Joint
- 100% Recycled HDPE (High Density Polyethylene)
- Reinforced Spike Bosses
- Open Base Design



Barrier Edge

COMPETITIVE – COST EFFECTIVE – QUALITY

- High quality edge, competitive/affordable solution
- Snip N Flex
- Injection Moulded
- Open Base Design
- 100% Recycled HDPE (High Density Polyethylene)
- Built In Solid Connection



Stronghold Aluminum

- Made of non-rusting recycled aluminium
- Hidden from view
- 90 degree angles without cutting
- Will not warp in heat or crack in cold
- Easy to insert piece to piece connector



Low Profile

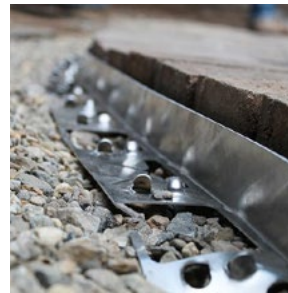
- High quality edge, competitive/affordable solution
- Snip N Flex
- Injection Moulded
- Open Base Design
- 100% Recycled HDPE (High Density Polyethylene)
- Built In Solid Connection
- Lower 13/8" back wall

PERMEABLE EDGE – OPEN GRADE



PermEdge

- Fully assembled spikeless edge
- No costly concrete to pour
- No delay in project construction
- Can be installed in straight runs or curves
- Edging remains hidden after completion
- Perfect for 60mm & 80mm pavers
- Installs on stone chip permeable paver bed
- Holds permeable pavers in place



Quick-E-Hybrid Edge

- Use with the Quick-E-Hybrid Stake for permeable applications
- Use with a standard spike for dense grade applications
- 8' in length
- Made of aluminium
- Easy to cut and form around curves

GARDEN EDGE



Precision Garden Edge

Made of 100% recycled materials to produce quality edging solutions for a wide variety of landscape applications that stays in the ground. Precision Edge is the strongest, most environmentally friendly landscape edging available today.



Retail Barrier Edging

Ideal for creating a professional edge to your planting beds and gardens. Perfect solution for building tree rings, creates permanent barrier between different landscape materials, while holding landscape fabric and weed barriers firmly in place.

POLYMERIC SAND & JOINTING COMPOUND



EV Evolution

All IN ONE Sand
Joints up to 4"



Polysweep

Just Damn Good Sand
Premium No Haze
Formula

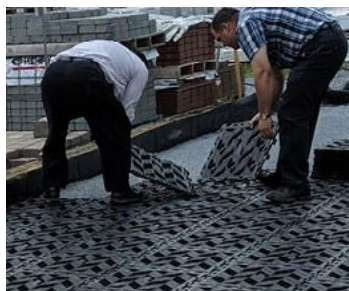
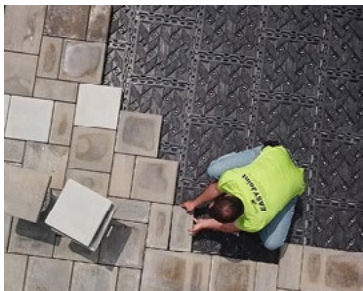


EASYJoint

All-Weather Jointing Compound
Works in shoulder seasons



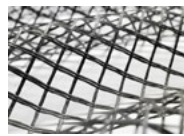
EasyClickBase – VEHICLE COMPATIBLE - SYNTHETIC BASE



ACCESSORIES



Sealers & Cleaners
Surebond



Fabric & Grid
Mirafi



Adhesive
Stronghold & Paver Bond



Spikes
Stronghold

ASK ABOUT



Pave Tool Clamps



Pave Tool Suction Equipment



Halder Mallets & Sledges



Weber Compactors & Pave Rollers

Authorized Dealer: