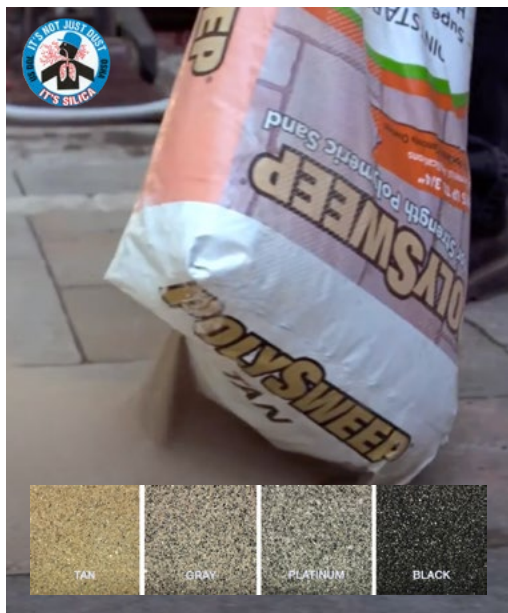


## POLYSWEEP PREMIUM POLYMERIC SAND



## POLYSWEEP® JUST DAMN GOOD SAND!

NO - HAZING (No Portland Cement)  
NO - CHANGE IN FORMULA  
NO - INCONSISTENT PERFORMANCE  
NO - CALLBACKS  
NO - COMPROMISE

- Up to 3/4" Joints
- Super Fine Grains
- Superior Strength

50 lb Moisture Resistant Bags  
56 Bags / Pallet



### POLYSWEEP ESTIMATED COVERAGE PER 50LB. BAG

JOINT SIZE	AREA IN SQ. FT.
Up to 1/4"	50 - 75
1/4" - 1/2"	25 - 50
1/2" - 3/4"	15 - 25

Coverage will vary depending on shape, size & depth of pavers.

## EVOLUTION POLYMERIC SAND



## EVOLUTION Polymeric Sand

## ALL IN ONE JOINTS UP TO 4"

ONLY ONE SAND REQUIRED – EVERY JOINT – EVERY JOB

- No need to stock several different formula's – LIMIT SKUs
- Does joints up to 4" wide
- Only needs one watering (shower setting)
- State of the art manufacturing
- Smart polymer technology
- See through bags eliminate picking errors
- Water resistant bags with pour spout



Since 1990

greatnorthhardscape.com



## KEY BENEFITS: Why use EASYJoint?

- 14 Years Proven Reliability
- No Worry Scheduling - No Return Visits
- Can Install in Wet (Light Rain) and Cold Weather (Down to 3° C)
- For Joints up to 5" Wide
- Permeable Jointing Compound
- Wet Applied - Air Cured (Impossible to over wet)
- Ideal for Shoulder Season Installations (April-May & October-November)
- THE Answer for Permeable Applications
- Zero Haze / Staining
- Zero Dust
- Simpler & Faster Than Traditional Methods
- No Waste (Scoop up left-over product - fill bucket with water for future use)
- Excellent DIY Residential Product - Easy Install
- Durable and Long Lasting
- Suitable for Light Vehicular Use On Dense Grade Projects.
- Freeze Safe

**CONTAINER SIZE:** 28 lb. Tub

**YIELD:** 1 Tub = 25-75 sq. ft.

(Depending on Width and Depth of Joints and style of stone used)

## Short Install Video:

Please be sure to follow all instructions

<https://youtu.be/cmxAAY30eT50>

<https://greatnorthhardscape.com>

## What is EASYJoint ALL-WEATHER JOINTING COMPOUND?

**EASYJoint** is an All-Weather Permeable Jointing Compound that is a quick, effective, aesthetically pleasing way to fill joints between paving stone installations. It is suitable for all types of paving material provided there is a gap of at least 3mm wide and 25mm deep between joints.

As the name implies, **EASYJoint** is easy to use; simply soak the paving stones and jointing compound while simultaneously sweeping jointing compound into the joints, letting the water wash it into place. **Simple.** (For tight joints use a Pave Roller)

### COLOURS AVAILABLE

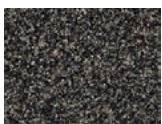


Mushroom  
(Beige)



Stone Grey

### PREMIUM COLOURS



Basalt  
(Dark Grey)



Black